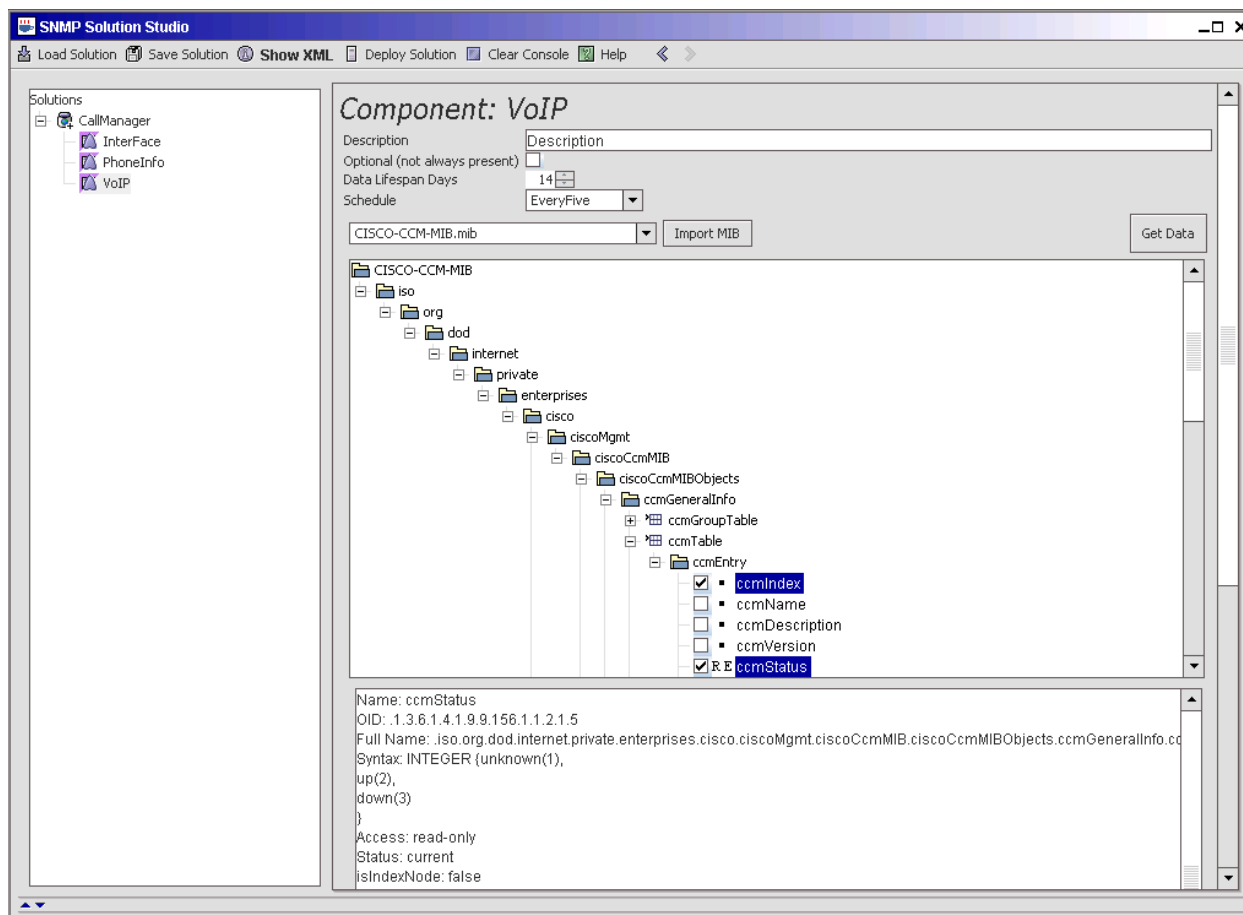


## SNMP Solution Studio

Out-of-the-box, Heroix Longitude includes several SNMP-based solutions (e.g. Cisco, InsightManager, OpenManage, DHCP), as well as SNMP transaction monitoring. SNMP Solution Studio provides additional flexibility for SNMP alerts and reports by enabling Longitude to monitor any SNMP-based device or application, including switches, routers and other hardware devices, as well as middleware and custom applications.

SNMP Solution Studio also provides an interface for browsing Management Information Base (MIB) files. MIB files detail what SNMP objects are available for collection from an application or a device and give an address (Object ID or OID) for each object. SNMP Solution Studio comes pre-loaded with a variety of MIBs, and additional MIBs can be added easily. Creating a solution in SNMP Solution Studio is as simple as browsing a MIB tree to select SNMP objects for collection and then filling in brief forms in order to configure integrated events and reports for Longitude to create.



Above: Longitude's SNMP Solution Studio will browse any MIB and walk you through the available data items. Above, the Status field in the Cisco Call Manager MIB is shown to have three possible values you might check for: 1 (status unknown), 2 (up), or 3 (down). Longitude can archive data, generate alerts and take actions based on any metrics and conditions of interest.

## Features include:

- **Select any SNMP-based metrics to monitor** - Longitude will “walk” any MIB and present the available metrics. The SNMP Solution Studio displays information from the MIB that helps you understand the MIB contents and select the metrics you need to monitor.
- **Receive intelligent alerts** – Longitude can notify you whenever an SNMP-based metric exceeds a threshold or meets whatever criteria you define. Alerts can be as specific as you wish, and can even provide instructions regarding how to troubleshoot and resolve the problem.
- **Full event correlation and action capabilities** – Any SNMP-based event can be used to trigger a Longitude action or correlated event. This enables you to have Longitude recognize site-specific issues, send emails, generate SNMP traps, and even take corrective actions based on SNMP monitoring.
- **Generate reports** – Once you define and deploy your SNMP-based collection, Longitude will automatically archive data and can report and graph any metrics of interest to you.
- **Incorporate SNMP data into SLAs** – You can include SNMP-based metrics in Service Level Agreements along with any other metrics collected by Longitude, to provide a unified view of business service performance.

## Technical Requirements:

- Runs as a native Windows or Linux application
- Does not require SNMP on the Management Station or Statistics Server
- Supports SNMP V1, V2, V3



165 Bay State Drive  
Braintree, MA 02184  
Telephone: 800-229-6500 / 781-848-1701  
[www.heroix.com](http://www.heroix.com)  
[info@heroix.com](mailto:info@heroix.com)

Features and support may vary by platform. Heroix believes that the information in this document is accurate as of its publication date; such information is subject to change without notice. Heroix is not responsible for any inadvertent errors. Heroix, the Heroix logo, and Heroix Longitude are registered trademarks of Heroix. All other trademarks are property of their respective owners. © 2008 Heroix. All rights reserved.