

Synthetic Web Transactions

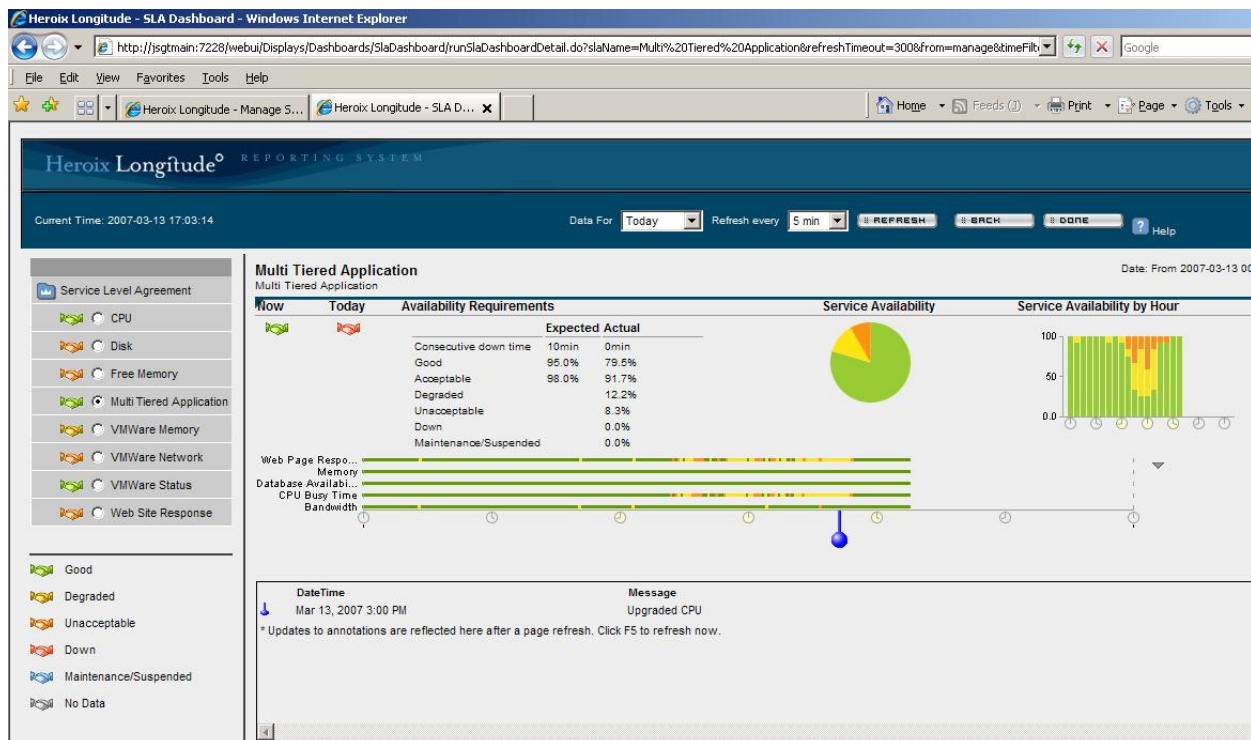
Monitor User Experience

Longitude enables you to emulate the experience of a web site user by recording web transactions of interest, and then replaying them to assess the availability, response and content of the site.

How it Works

Begin by recording a Web transaction, click by click, that you want to test on a recurring basis. Specify how frequently you want the transaction to run. Longitude will initiate the synthetic transaction as scheduled, and report events when problems are detected.

By default a Longitude event notification is generated in response to failures, and these events can be used to trigger actions or correlated events. You can also create Service Level Agreements that give a holistic picture of your business services by mapping synthetic transactions to their underlying server and infrastructure components:



Features include:

- Receive intelligent alerts – Longitude can notify you whenever a transaction fails, does not return expected content, or exceeds your chosen response threshold. Alerts can be as specific as you wish, and can even provide instructions regarding how to troubleshoot and resolve the problem.
- Full event correlation and action capabilities – Any synthetic transaction event can be used to trigger a Longitude action or correlated event. This enables you to have Longitude

recognize site-specific issues, send emails, generate SNMP traps, and even take corrective actions based on user experience monitoring.

- Generate reports – Once you define and deploy your synthetic transaction, Longitude will automatically archive data and can report and graph any metrics of interest to you.
- Incorporate user experience data into SLAs – You can include synthetic transaction metrics in Service Level Agreements along with any other metrics collected by Longitude, to provide a unified view of business service performance.

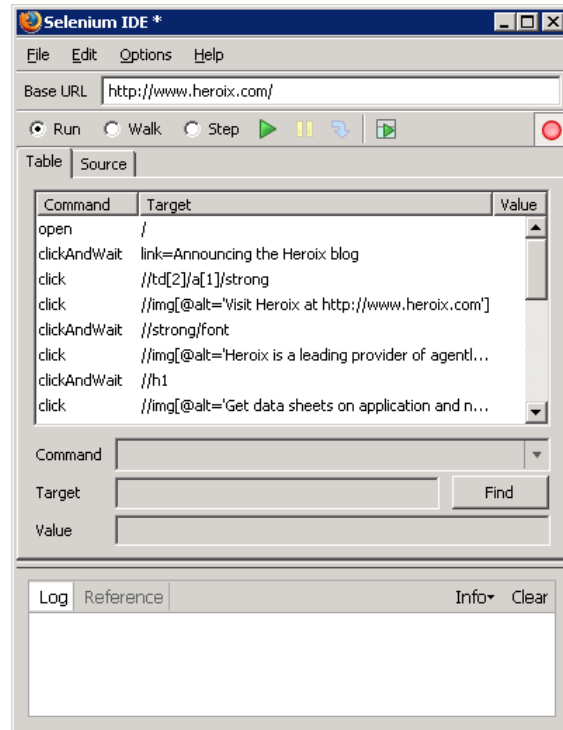
Selenium IDE

Longitude uses Selenium IDE to record web transactions in the form of macros, which Longitude subsequently executes in the background at whatever interval you specify. Selenium IDE is provided with Longitude, and can be installed in minutes.

To record a macro, simply open Selenium IDE from your Firefox browser window, open the web page from which the transaction starts, and navigate the web site to perform the transaction you wish to test.

Selenium IDE provides a rich set of transaction measurement features, including the ability to:

- Check page availability, responsiveness, and expected content
- Monitor multiple transactions on the same server
- Monitor http and https protocols
- Separate transactions into individual steps
- Encrypt passwords for transactions requiring logins



Technical Requirements:

- Windows Statistics Server with Firefox 3.0 and Selenium IDE 1.0.2



165 Bay State Drive
Braintree, MA 02184
Telephone: 800-229-6500 / 781-848-1701
www.heroix.com
info@heroix.com

Features and support may vary by platform. Heroix believes that the information in this document is accurate as of its publication date; such information is subject to change without notice. Heroix is not responsible for any inadvertent errors. Heroix, the Heroix logo, and Heroix Longitude are registered trademarks of Heroix. All other trademarks are property of their respective owners. © 2010 Heroix. All rights reserved.